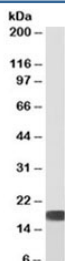


## SOD Antibody [Biotin Conjugate] (R36046BTN)

Catalog No.	Formulation	Size
R36046BTN	0.5 mg/ml in 1X TBS, pH7.3, with 0.5% BSA (US sourced) and 0.02% sodium azide	100 ug

[Bulk quote request](#)

Availability	1-3 business days
Species Reactivity	Human, Mouse, Rat
Predicted Reactivity	Dog
Format	Biotin Conjugate
Host	Goat
Clonality	Polyclonal (goat origin)
Isotype	Goat Ig
Purity	Antigen affinity
Gene ID	6647
Applications	Western Blot : 0.2-0.5ug/ml ELISA (peptide) LOD : 1:8000
Limitations	This SOD antibody is available for research use only.



Western blot of human HEK293 cell lysate with biotinylated SOD antibody at 0.3ug/ml. Predicted molecular weight: ~16kDa. An NAP blocker was used in place of non-fat milk as blocking solution and diluent. (1)

### Description

Additional name(s) for this target protein: Superoxide dismutase 1, SOD1

### Application Notes

Optimal dilution of the SOD antibody should be determined by the researcher.

1. Do not use a blocking agent or diluent that contains biotin (including milk and some BSA preparations) when testing with biotinylated antibodies. A non-animal protein (NAP) blocker is recommended.

## **Immunogen**

Amino acids SRKHGGPKDEERH were used as the immunogen for this SOD antibody.

## **Storage**

Aliquot and store the SOD antibody at -20oC.